

C/ Lagar, 2 - 4 · E-41004 · Seville · Spain
Tel.: +34 954 548 712
h10.casa.delaplata@h10hotels.com
www.hotelh10casadelaplata.com

Information and bookings:
Tel.: +34 900 444 466
reservas@h10hotels.com
www.h10hotels.com

Setting

Located in the heart of the historic centre of the city, the **H10 Casa de la Plata** enjoys an exceptional location next to the Plaza del Salvador, in the midst of a wide range of dining and shopping options and just a 5-minute walk from the cathedral, the Giralda, the Santa Cruz neighbourhood and the Royal Alcázar palace.

- 0 m from the historic centre
- 500 m from the cathedral, the Giralda bell tower and the Royal Alcázar palace
- 900 m from La Maestranza bullring
- 1.2 km from Plaza de Armas bus station
- 1.5 km from the Torre del Oro
- 1.6 km from Prado San Sebastián bus station
- 1.8 km from Santa Justa train station
- 2 km from Plaza de España and María Luisa Park
- 2 km from Isla Mágica theme park
- 2.6 km from Ramón Sánchez-Pizjuán Stadium
- 2.9 km from Isla de la Cartuja
- 4.3 km from Benito Villamarín Stadium
- 6 km from the FIBES conference centre
- 9 km from the Club Zaudin Golf
- 10 km from the Real Club de Golf
- 16 km from Seville airport

Coordinates: 37° 39' 11.21" N / 5° 99' 25.26" W



Description

The **H10 Casa de la Plata** is a newly built four-star hotel located on a charming pedestrian street in the historic centre of Seville. The interior design, inspired by a typical Sevillian house, fuses traditional elements, such as ceramics and tiles typical of Seville with other more contemporary ones. The establishment has elegant rooms, a restaurant for breakfast with access to an exclusive typical Andalusian courtyard, a lobby bar and different areas for meetings and events.

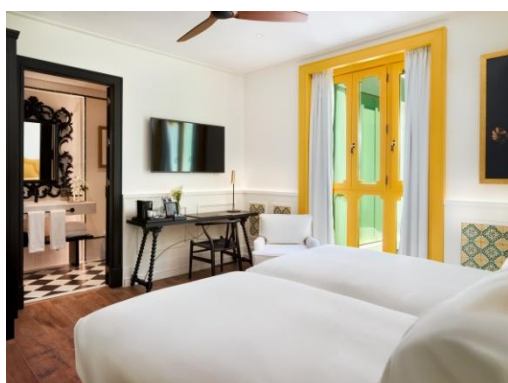
- 73 rooms**
- Complimentary Wi-Fi** throughout the hotel
- Magallanes Restaurant for breakfast**
- Lobby Bar**
- Outdoor courtyard** decorated with an elegant Andalusian-inspired fountain
- 2 meeting rooms** with natural light
- Room for celebrations**



Rooms

The **H10 Casa de la Plata** has elegant rooms designed for rest and relaxation. Their interior design is Andalusian-inspired and features traditional Seville tiles, original hand-painted pieces created exclusively for the hotel, as well as lattices on the walls and ceilings. The rooms are equipped with all the amenities:

- 49" Smart TV with international channels
- Complimentary bottle of water per person upon arrival
- Complimentary Nespresso machine with daily restocking of capsules
- Minibar (\$ according to consumption)
- Kettle (on request)
- High-end mattress with soft feather topper
- Pillow menu (on request)
- Bathrobe and slippers
- USB ports and international plug sockets
- Digital in-room safe
- Individually adjustable air conditioning system and ceiling fan
- Iron and ironing board (on request)
- Bathroom with professional hairdryer, rain shower and magnifying mirror



ATRIUM DOUBLE ROOM

Atrium Double Rooms: comfortable rooms measuring approximately 21 - 26 m² with a double bed (2 x 2 m King Size or 1.80 x 2 m Queen Size) or 1 x 2m twin beds. They have views of the hotel atrium and some come with a Japanese toilet.



SEVILLA DOUBLE ROOM

Sevilla Double Rooms: elegant and bright rooms measuring between 24 - 27 m² overlooking the streets of central Seville. They come with either a double bed (2 x 2 m King Size or 1.80 x 2 m Queen Size) or 1 x 2m twin beds. Some come with a Japanese toilet.



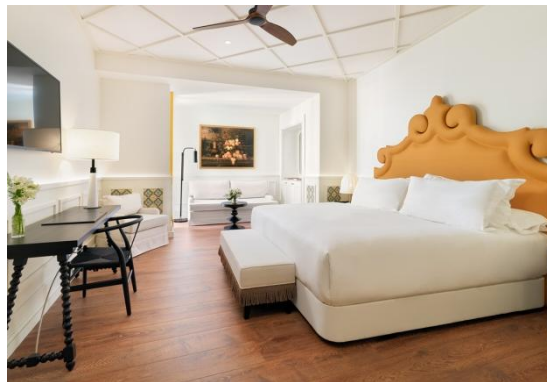
TRIPLE ROOM

Triple Rooms: spacious rooms measuring approximately 26 - 30 m² made up of a bedroom area with a double bed (2 x 2 m King Size or 1.80 x 2 m Queen Size), sofa bed (0.90 x 1.90 m) and views onto the streets of the city centre. They come with a Japanese toilet.



JUNIOR SUITE

Junior Suites: exclusive rooms measuring approximately 30 - 35 m² that include a bedroom with a King Size bed (2 x 2 m), a living room with a sofa bed and a large bathroom with a double washbasin, Japanese toilet and double rain shower.



FAMILY ROOM

Family Rooms: spacious rooms measuring up to 35 m², ideal for families looking for a larger room. They come with a King Size bed (2 x 2 m), a living room with a double sofa bed (1.50 x 1.90 m) and a large bathroom with a double washbasin, Japanese toilet and bath tub. They can easily accommodate up to 2 adults + 2 children.

Note: the décor, size and views of the rooms may vary depending on the room allocated.

Restaurants and bars

Magallanes Restaurant: it offers a varied breakfast buffet with high-quality fresh products. It has access to an exclusive outdoor courtyard with natural light and an elegant fountain made with Seville tiles.

Lobby Bar: an elegant space located on the mezzanine floor of the hotel. Ideal for relaxing and enjoying a selection of delicious light dishes and a varied menu of drinks and cocktails.



MAGALLANES RESTAURANT



ANDALUSIAN COURTYARD



LOBBY BAR



The **H10 Casa de la Plata** has different areas for meetings and events. The hotel offers two meeting rooms with natural light fully equipped for either work meetings or private events. The Colón room has access to the hotel's pleasant courtyard, ideal for hosting drinks receptions and coffee breaks. In addition, the Magallanes Restaurant can be converted into a room for celebrations.

MEETINGS & EVENTS
H10 HOTELS

Spaces for events	m ²	Height	CAPACITY							
			Drinks Reception	Theatre	Classroom	Boardroom	Banquet	Cabaret	"U"	"O"
COLÓN	68	2.50 m	75	73	48	24	40	25	27	36
ELCANO	50	2.80 m	40	39	21	16	-	-	18	24
MAGALLANES	177	2.50 m	-	-	-	-	60	-	-	-
PATIO	155	-	50	-	-	-	-	-	-	-

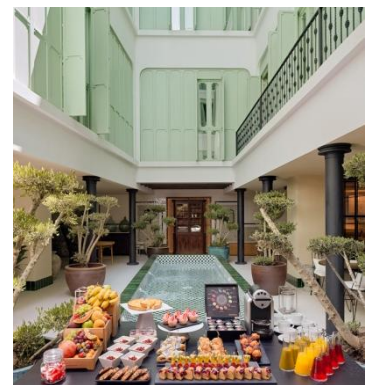
* The calculation of the capacity is approximate and subject to change. For more details consult the sales department of the hotel.



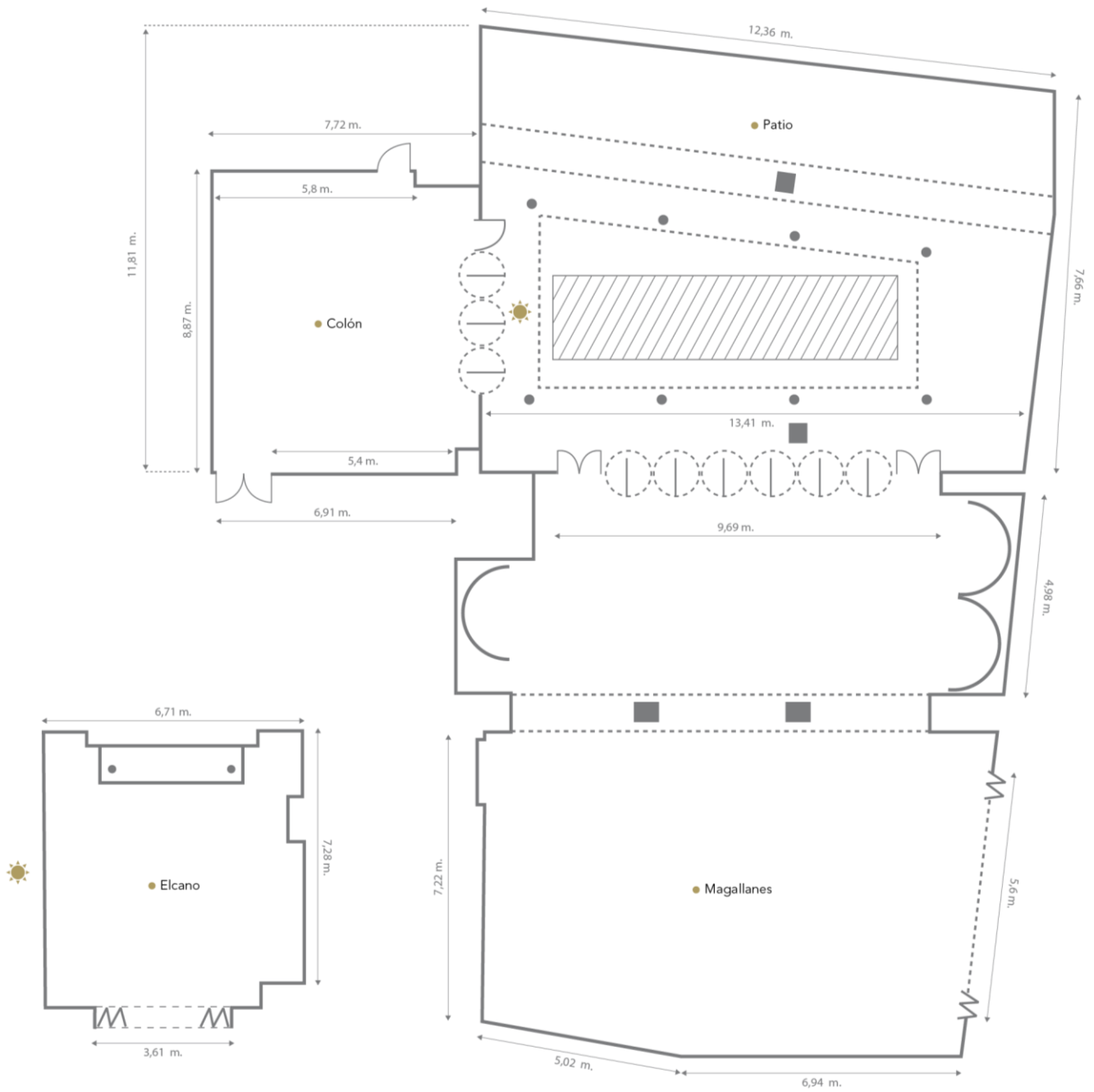
COLÓN ROOM – U-SHAPE LAYOUT



ELCANO ROOM – CLASSROOM LAYOUT



COFFEE BREAK IN THE COURTYARD



 Luz Natural · Natural Light