



FACT SHEET

TRYP

BY WYNDHAM

LISBOA
CAPARICA MAR





LISBOA
CAPARICA MAR

Welcome to TRYP Lisboa Caparica Mar

The TRYP Lisboa Caparica Mar Hotel provides a relaxing and unwinding atmosphere, located on the seafront, on the most extensive and famous beach of the Lisbon Region, the Costa da Caparica.

Just 20 minutes from the centre of Lisbon and 20 minutes from the airport, it has 354 rooms, spread over 7 floors, equipped with air conditioning and a private TV. The Tryp Lisboa Caparica Mar has an outdoor swimming pool, three restaurants, children's play area - Palmo e Meio club, 1 roof top bar, 7 conference rooms, equipped with the latest sound and image technologies.

Due to its location and characteristics, this is the ideal hotel to spend a dream holiday, to organise your business meetings, or even to host amazing civil ceremonies, cocktails or other events.



Features

- Non-smoking rooms
- Complete bathroom with hairdryer
- Rooms with a bathtub
- Individually controlled A/C in the rooms
- Telep hone with direct outside access
- LCD TV with satellite channels
- Safety Deposit Box
- Room service
- Mini Bar
- Restaurant
- Bar
- Rooftop Bar
- Lifts
- Laundry Service
- Babysitting Service
- Wi-Fi Internet
- Outdoor pool
- Meeting and conference rooms
- Chargable indoor parking
- Balcony in all rooms
- Gym and SPA

Avenida General Humberto Delgado, 47
2829-506, Costa da Caparica - Lisboa - PORTUGAL
T.: (+351) 212 918 900 • book.caparica@trypportugal.com
www.tryplisboacaparica.com

GPS: 38.641507 [N], -9.236489 [W]



354

Total Rooms

102

Standard Twin

43

Standard Double

6

Family

133

Superior Twin

56

Superior Double

14

Suites

Restaurant TRYP Lisboa Caparica Mar



Horizon Restaurant

Located on the 8th floor of the hotel, it offers a stunning panoramic view over the extensive Costa da Caparica beach. It is an authentic viewpoint, from where you can see the Sintra Mountains and all the Coastal beaches to Cape Espichel.

Opening Hours:

Dinner: 07:30 pm to 10:30 pm

Paparica Restaurant

This is the hotel's buffet restaurant where, in addition to breakfasts, lunches and dinners are also served, with a wide variety of hot and cold specialties. We serve the best quality in a tranquil and familiar environment.

Opening Hours:

Breakfast: 06:30 am to 10:30 am

Lunch: 12:30 pm to 03:00 pm | Dinner: 07:00 pm to 10:00 pm

Garden Bar

The Garden Bar has a relaxed atmosphere, with a large terrace where you can enjoy the sun and light meals during the summer. Whether it's a mid-afternoon snack, an aperitif before dinner or even a cocktail at nightfall, this is an ideal place to relax and unwind.

Opening Hours:

10:00 am to 01:00 am

Red Dragon Beach Club

The Red Dragon Beach Club is the hotel's beach bar, located on Red Dragon Beach, facing the sea, with a beach area reserved for its guests.

Opening Hours:

10:00 am to 08:00 pm

09:00 am to 08:00 pm - during summer



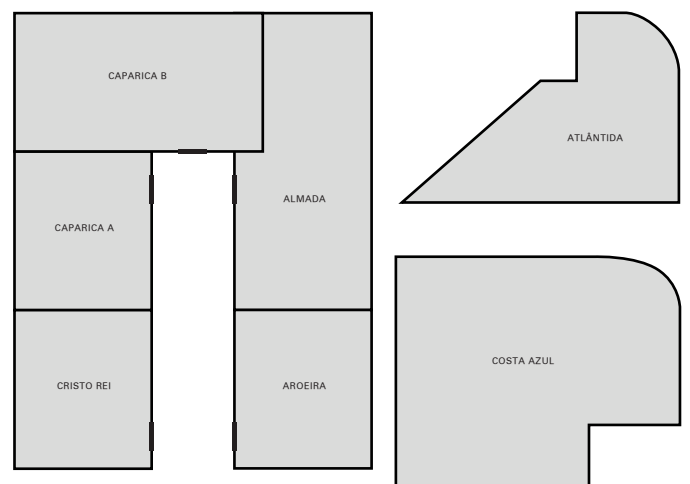
Meeting rooms

The TRYP Caparica Mar also has six rooms ideal for organising events and meetings.

ROOM	FLOOR	m2	HEIGHT	COCKTAIL	AUDIENCE	SCHOOL	CABARET	BANQUET	IN "U"
Aroeira	0	45	3.65	40	35	24	12	32	18
Almada	0	82	3.65	75	70	50	36	70	33
Caparica B	0	96	3.65	80	100	80	48	100	42
Caparica A	0	53	3.65	40	40	27	12	40	21
Cristo Rei	0	54	3.65	40	40	27	12	40	21
Costa Azul	8	315	4	400	340	180	160	250	66
Atlântida	8	322	4	360	300	160	160	250	60
Breakout Room	.	27	2.60	.	12	9	.	.	9
Breakout Suite	.	40	2.60	.	20	12	.	.	15



Distribution map of rooms



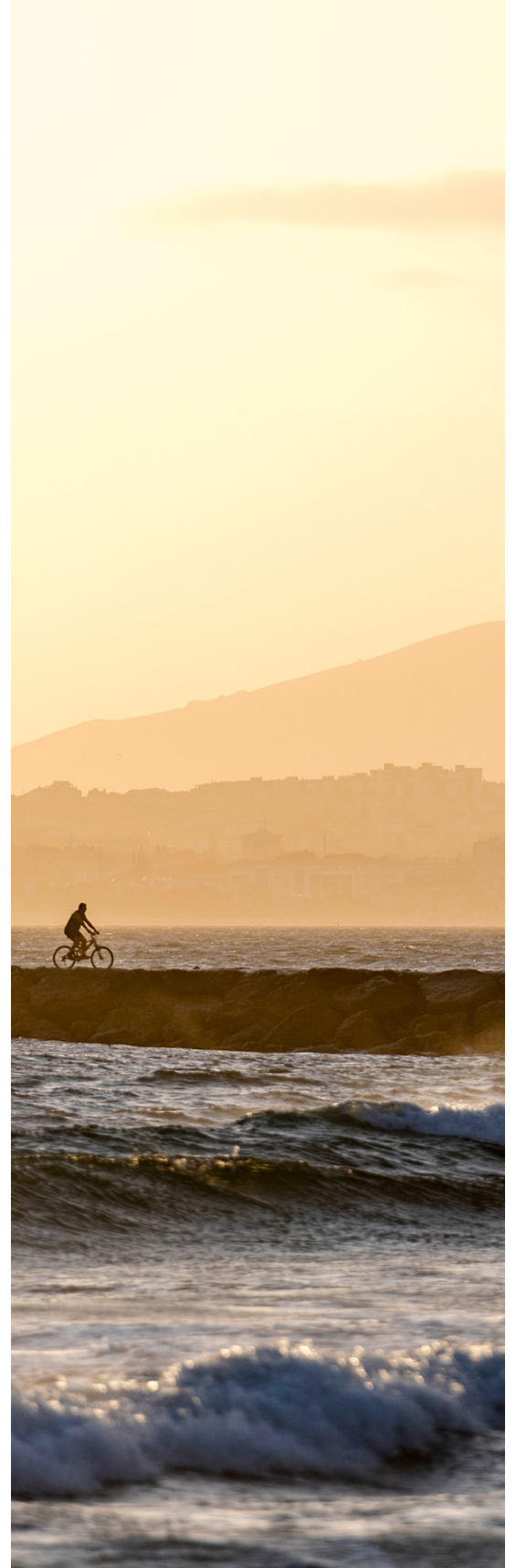
Destination Caparica

Situated on the coastline, and largely due to the ocean's indentation, the parish of Costa de Caparica occupies an area of 10.74 km², between the sea and the cliff. It is the largest continuous beach in the country, with an extension of approximately 25 km.

The protected landscape of the Arriba Fóssil of the Costa de Caparica presents greatly interesting geological and geomorphological aspects, not only from the scientific point of view, but also of scenic beauty. The beautiful forms of erosion that it presents, its ocher shades and abundant ravines crowned with vegetation, constitute an unusual backdrop to the whole line of beaches.

Destination Lisbon

If you're dreaming of your next trip, come and visit Lisbon, a historic city with lots to share. Lisbon has a pleasant climate with 290 days of sunshine per year and temperatures rarely drop below 15°C. The rich Portuguese gastronomy is considered Europe's best kept secret and in this city you will find excellent restaurants to suit all tastes, budgets and requirements. An authentic capital, where ancient habits and secular history intersect with cultural animation and technological innovation: Lisbon has no age, but loves company.



What to visit in Caparica

The protected landscape of the Costa da Caparica's Arriba Fossil.

Convent of the Capuchos

Promenade along the beach with children's playground and outdoor sports park

Cristo Rei - Almada

Ascensor panorámico y jardín de Río - Almada

"Parque da Paz" - Almada

"Casa da Cerca" - Almada

Baía do Seixal

"Moinho de Maré" - Corroios

Distance to important locations

Airport | 30 min. - 23 km

Lisbon city centre | 30 min. - 16 Km

Bus to Lisbon | nº161 - 700m

Trafaria - boat to Lisbon | 20 min. - 6 km

Hospital | 15 min. - 8 km

"Pragal" Train station | 10 min.- 4 km

"Universidade" Metro | 15 min.- 5,7 km

Expo Coneference Centre | 30 min. - 26 km

Christ the King | 15 min. - 9 km

Restaurant area | 5 min. - 100m

Nightlife area | 5 min. - 100m

Beach | 1 min. - 50m

