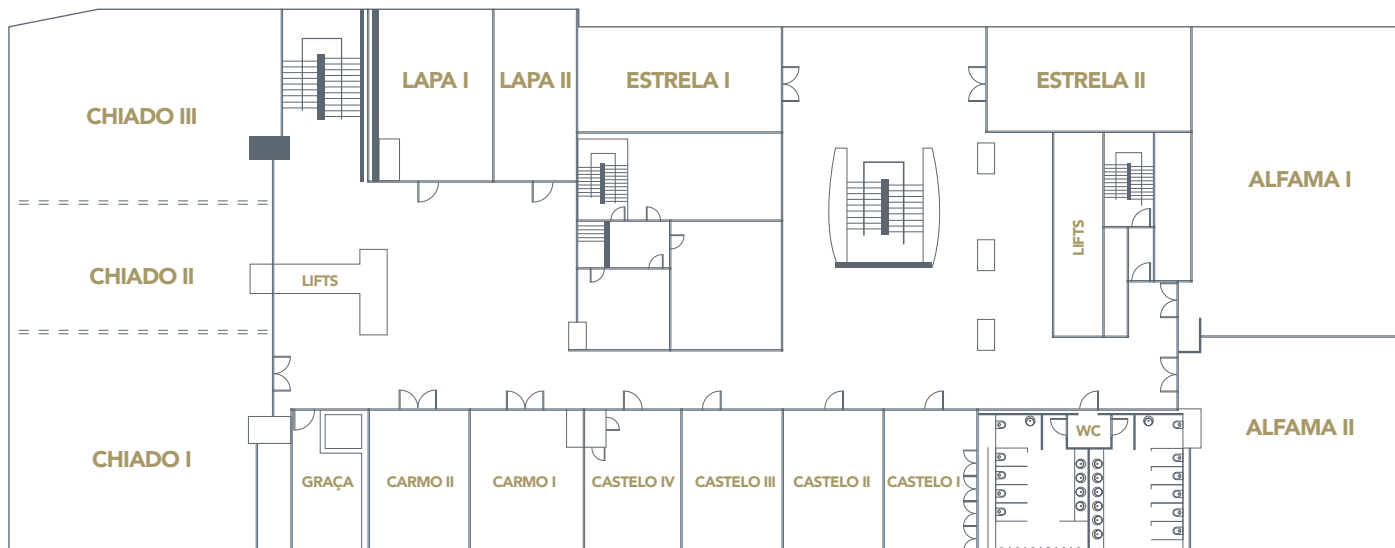


FLOOR - 1



DIMENSIONS

Total Area: 2.450 m² (gross floor area)

Length: 89 m

Width: 29 m

Height: 3,5 m

ACCESSES

1 Central Stairway

7 Lifts

DOORS

Width: 90cm (each panel)

AIR CONDITIONING AND LIGHTING

Temperature control: Automatic

Natural Daylight: Yes

Blackout: Yes

Lighting control: Yes

WI-FI

Clients' Network with 1Gbps bidirectional bandwidth

POWER SUPPLY

5 X 63A three-phase power plugs: Chiado I, II and III; Alfama I and II + Lapa II (1 per room)

SIGNAGE

Digital: Yes

All rooms with digital screen at the door (22"

FHD – portrait layout)

LED WALL

2 – Chiado I and Alfama I (4,5 m X 2,5 m FHD)

SCREENS

Built-in Screens: 6

- Chiado II, Chiado III, Estrela I, Estrela II and Lapa I (3,5m X 2m)

- Alfama II (4,5m X 2,5m)

Portable Standing Screens: 1

- Lapa II (75")

Wall mount screens: 6

- Carmo I and Carmo II

- Castelo I to IV

PROJECTORS

Built-in projectors: 6

Chiado II, Chiado III, Estrela I, Estrela II, Lapa I and Alfama II (Full HD, LCD Laser 5000 lumens)

SOUND SYSTEM

Integrated audio contents broadcasting system

Chiado I+II+III – 12 x 200W passive speakers

+ 6 x 320w subwoofers

Alfama I+II – 10 x 200W passive speakers

+ 5 x 320w subwoofers

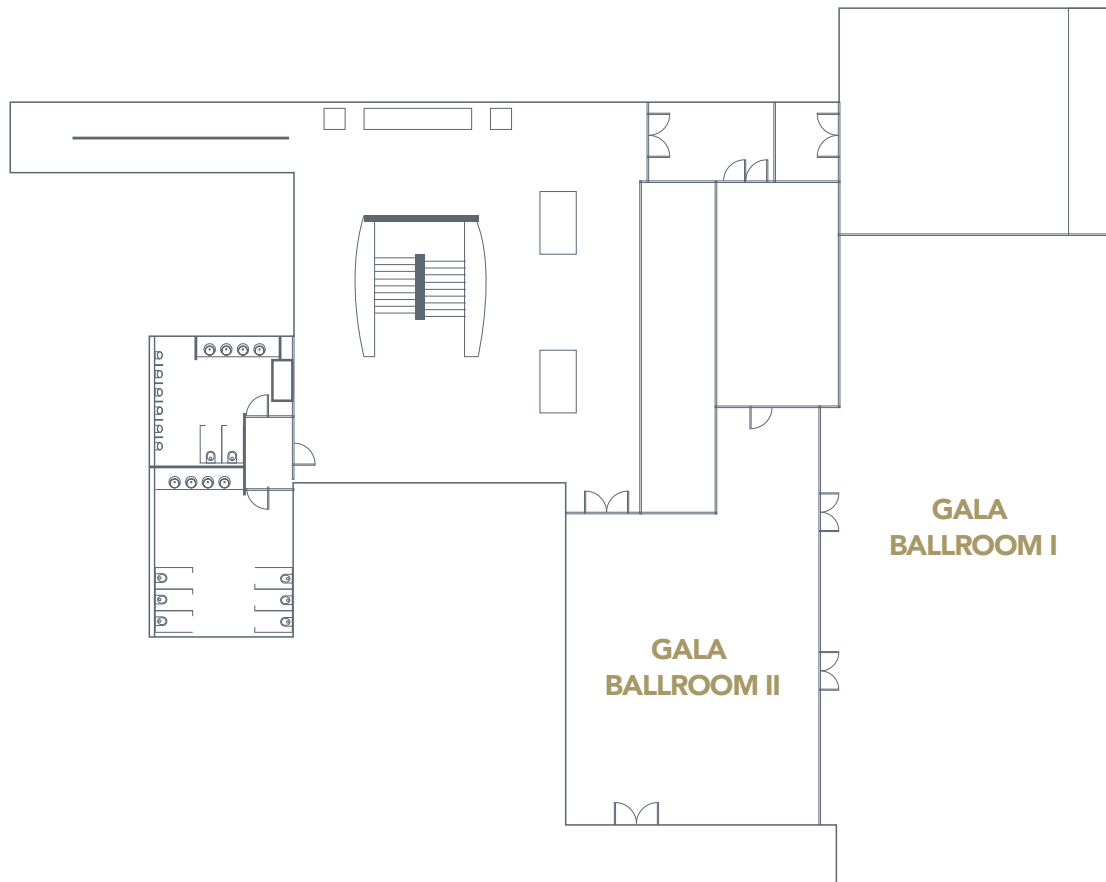
Remaining rooms – Each with 2 x 75W passive

speakers + 1 x 160W subwoofer

FLOOR - 1

ROOMS	AREA m ²	THEATRE	CLASSROOM		'U' SHAPE		BOARDROOM		BANQUET		CABARET		COCKTAIL with bistrot tables
			2 pax/ table	3 pax/ table	2 pax/ table	3 pax/ table	2 pax/ table	3 pax/ table	set menu	buffet	6 pax/ table	half round 5 pax	
CHIADO I	158												
CHIADO II	99												
CHIADO III	148												
GRAÇA	20												
LAPA I	56												
LAPA II	40												
ESTRELA I	72												
ESTRELA II	72												
ALFAMA I	187												
ALFAMA II	132												
CASTELO I	48												
CASTELO II	48												
CASTELO III	48												
CASTELO IV	48												
CARMO I	42												
CARMO II	38												
HALL -1	2142	COCKTAIL 1800 PAX											
CHIADO I+II	257												
CHIADO II+III	247												
CHIADO I+II+III	405												
LAPA I+II	96												
ALFAMA I+II	319												
CASTELO I+II / III+IV	96												
CASTELO I+II+III / CASTELO II+III+IV	144												
CASTELO I+II+III+IV	192												

FLOOR -2



DIMENSIONS

Total Area: 2.450 m² (gross floor area)
Length: 89m
Width: 29m
Height: 3,5m

ACCESSES

1 Central Stairway
1 Restaurant access Stairway
7 Lifts
2 Street doors

DOORS

Width: 90cm (each panel)

AIR CONDITIONING AND LIGHTING

Temperature control: Automatic
Natural Daylight: Yes
Blackout: Yes
Lighting control: Yes

SCREENS

Built-in Screens: N/A
Portable Standing Screens: N/A
Wall mount screens: N/A

LEDWALL

2 – Gala Ballroom I (4,5 mX 2,5 m FHD)
+ Gala Ballroom II (3 mX 1,75 m FHD)

PROJECTORS

Built-in projectors: N/A

SOUND SYSTEM

Integrated audio contents broadcasting system
Gala Ballroom I+II- 16 x 200W passive
speakers + 8 x 320w subwoofers

FLOOR -2

ROOMS	AREA m ²	THEATRE	CLASSROOM		'U' SHAPE		BOARDROOM		BANQUET		CABARET		COCKTAIL with bistrot tables
			2 pax/ table	3 pax/ table	2 pax/ table	3 pax/ table	2 pax/ table	3 pax/ table	set menu	buffet	6 pax/ table	half round 5 pax	
GALA BALLROOM I	305												
GALA BALLROOM II	120												
GALA BALLROOM I+II	425												